



SMI-LabHut Ltd

SMI-LabHut Ltd

The Granary, The Steadings Business Centre
Maisemore, Gloucestershire, GL2 8EY, UK

Tel +44 1452 310210

Fax +44 1452 300075

Email sales@labhut.com

Quick-Set Pump Control

Serial Pump Control Software for SSI / LabAlliance Pumps

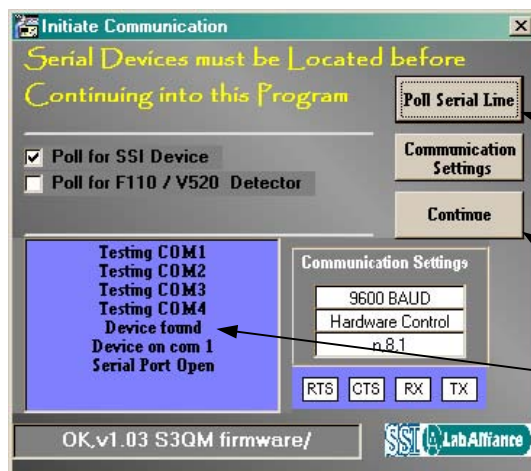
Installation

- Run the Quick-Set 'setup.exe' program file & follow prompts.
- Due to the many versions of Windows in use, your PC may have newer files than the ones being loaded. You will be prompted for a course of action, when in doubt, 'keep' your existing files or 'ignore' other messages.

General Information

If unsure of any pump settings or whether your model pump allows certain settings, the software will report back an error message if the command is not allowed. "11111" is an error code meaning that the communication is probably not available or communication has been broken.

Start-up Screen



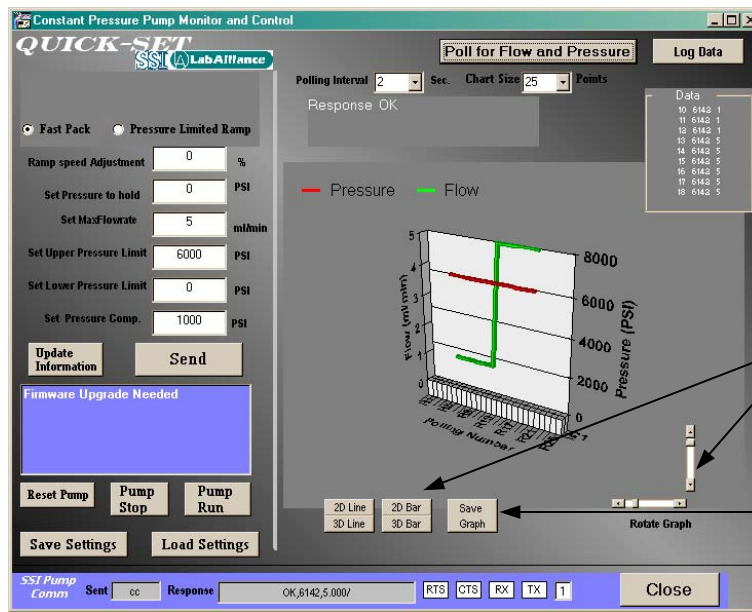
- Initial screen is for locating the SSI/LabAlliance pump or Detector.
- Click on the 'Poll Serial Line' button.
- This will scan the 4 standard PC COM ports for the attached device.
- When the device is found, click on the 'Continue' button.
- Ensure the Device is found before moving on. This assigns a port to open for all remaining screens.

Main Screen

- General pump information is displayed along with firmware identification.
- Information screens are updated automatically, however, refresh buttons are available for pump information
- Basic operations and basic flow rates buttons are available.
- Flow rate buttons for higher flows are available if the pump head type is set for the larger flow varieties.

Constant Pressure Column Packing Pump Control

- Constant pressure pump specific controls can be accessed through Pump > Constant Pressure:



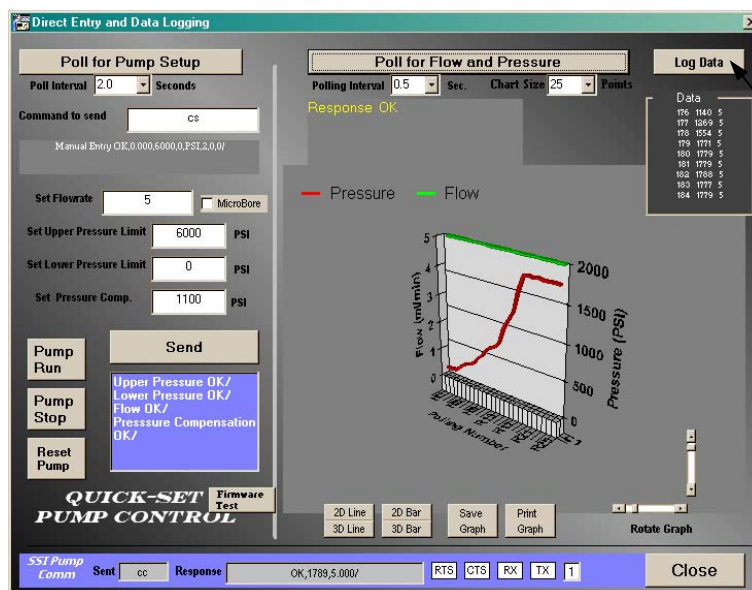
Graph display options

Graph may be saved for future display

- Constant pressure pumps continuous flow modification firmware requires some specific communication needs. Delays may be experienced in the start-up and updates of this screen.
- See the Constant Pressure pump manual for descriptions of these pump settings
- Pump flow and pressure may be graphed and logged (to a comma and space delimited text file).
- Zero readings are not graphed
- All entries in the test file are time stamped.
- Text files are easily imported into Excel but do not require Excel on the machine collecting the data.
- Absolute accuracy of the polling interval is not guaranteed, this is a Windows limitation.
- The graph will not start until the logging has been setup (prevents accidental data loss).

Advanced Constant Flow Pump Controls

- Advanced controls and data collection for constant flow pumps controls can be accessed through Advanced > Direct Entry and Data Acquisition:



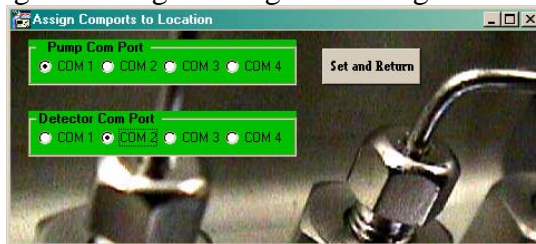
Data must be logged on this form before graphing will begin

- Flow commands as specified in the pump manual can be entered.
- Pump flow and pressure may be graphed and logged (to a comma and space delimited text file).
- All entries in the test file are time stamped.
- Text files are easily imported into Excel but do not require Excel on the machine collecting the data.
- Absolute accuracy of the polling interval is not guaranteed, this is a Windows limitation.
- The Graph will not start until the logging has been setup (prevents accidental data loss).
- Data may be logged as slow as one point every 15 minutes or multiple times per second.

Additional Menu Items

Manually Assigning COM ports

COM ports can be manually assigned through Configure > Assign Com Ports:



PC Connection to the Pump

A wiring diagram is available under Configure > RS232 Connection:

